



## Technical Rider

## Table of contents

<b>A. GENERAL .....</b>	<b>3</b>
1. Address & Contacts .....	3
2. About the venue .....	3
3. Access & Parking.....	4
4. Truck driving permit.....	5
<b>B. TECHNICAL ASPECTS .....</b>	<b>6</b>
5. Stage.....	6
6. Hall .....	6
7. Electricity .....	6
8. Truss .....	6
9. Sound .....	7
10. Lights .....	8
11. Positions .....	9
12. Projection.....	9
13. Followspot .....	9
14. SFX / Miscellaneous.....	9
15. Load In / Load Out.....	9
16. Risers .....	10
17. Sound restrictions .....	10
18. Merchandising.....	10
<b>C. SECURITY .....</b>	<b>12</b>
19. Miscellaneous .....	12
20. Medicals Emergencies services in Lausanne.....	13
<b>D. HOSPITALITY.....</b>	<b>14</b>
21. Areas of the venue .....	14
22. Production office .....	14
23. Dressing rooms .....	14
24. Artist catering.....	14
25. Laundry.....	15
26. Miscellaneous .....	15
<b>E. STAGEPLOTS &amp; 3D VIEWS .....</b>	<b>16</b>
<b>F. MISCELLANEOUS.....</b>	<b>20</b>
27. Areas of venue & Pictures.....	20
28. Pictures of the stage .....	21
29. Emergencies services map .....	22

## A. GENERAL

### 1. ADDRESS & CONTACTS

Address : **LES DOCKS**  
Av. de Sévelin 34 (zone B)  
1004 Lausanne  
Switzerland

Phone : +41 21 623 44 44  
Fax : +41 21 623 44 45  
Website : [www.docks.ch](http://www.docks.ch)

**Director & Head of program**  
Phone : +41 21 623 44 44  
Email : [laurence@docks.ch](mailto:laurence@docks.ch)

**Production Manager**  
Phone : +41 78 750 44 41  
Email : [alexandre@docks.ch](mailto:alexandre@docks.ch)

**Technical & sound engineer**  
Phone : +41 79 563 83 55  
Email : [technic@docks.ch](mailto:technic@docks.ch)

**Light engineer**  
Phone : +41 79 535 33 63  
Email : [light@docks.ch](mailto:light@docks.ch)

**Head of communication**  
Phone : +41 78 750 44 44  
Email : [communication@docks.ch](mailto:communication@docks.ch)

**Head of Security**  
Phone : +41 78 750 44 43  
Email : [securite@docks.ch](mailto:securite@docks.ch)

### 2. ABOUT THE VENUE

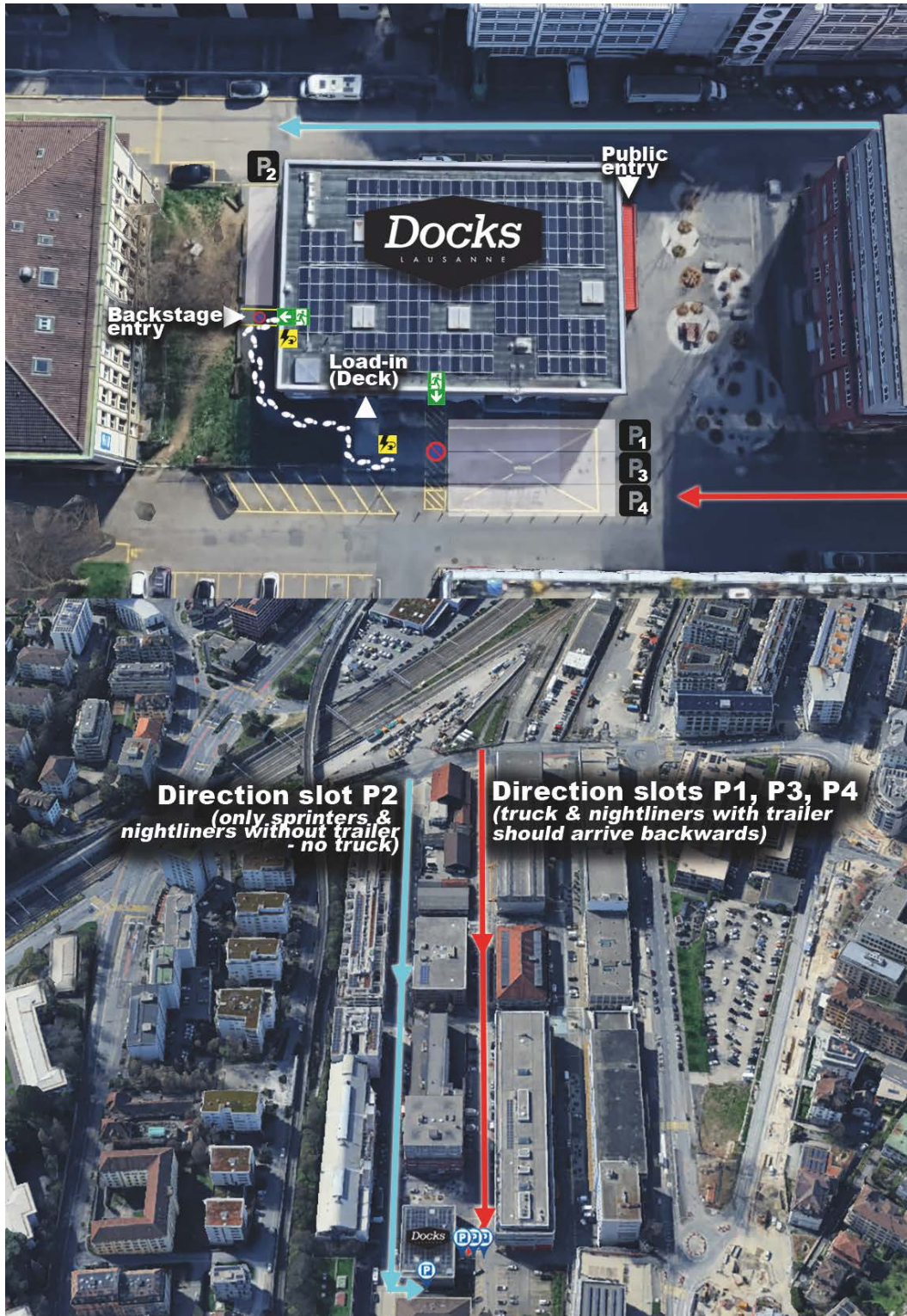
Type : Live Music Venue  
(*standing, no seats*)

Capacity : 1010 people (inc. guests)

Age admission : 16 years old (people under the age of 16 must be accompanied by a parent or a legal representative. Admission is prohibited to children under 4 years old - unless stated otherwise.

PRM : Access to the concert hall is on flat ground. Wheelchair's adapted toilet is available for audience. No specific viewing platform.

### 3. ACCESS & PARKING



Slots 1-3-4 (load in area): Trucks / Nightliners with trailer | Slot 2: Nightliners without trailer

*Depending on traffic conditions, it is difficult to turn in front of the load-in area. Therefore, trucks & nightliners with trailer should arrive at the load-in area in reverse.*

***Please make sure to keep the corridors for emergency doors free (at least 1h before doors opening and till audience curfew). Audience won't be allowed in the building if emergency corridors are blocked.***

*Please discuss availability and arrival/departure times with Docks Production manager during the advance. Electricity available upon arrival. Water available on demand (please don't use personal tools as they might damage the tap).*

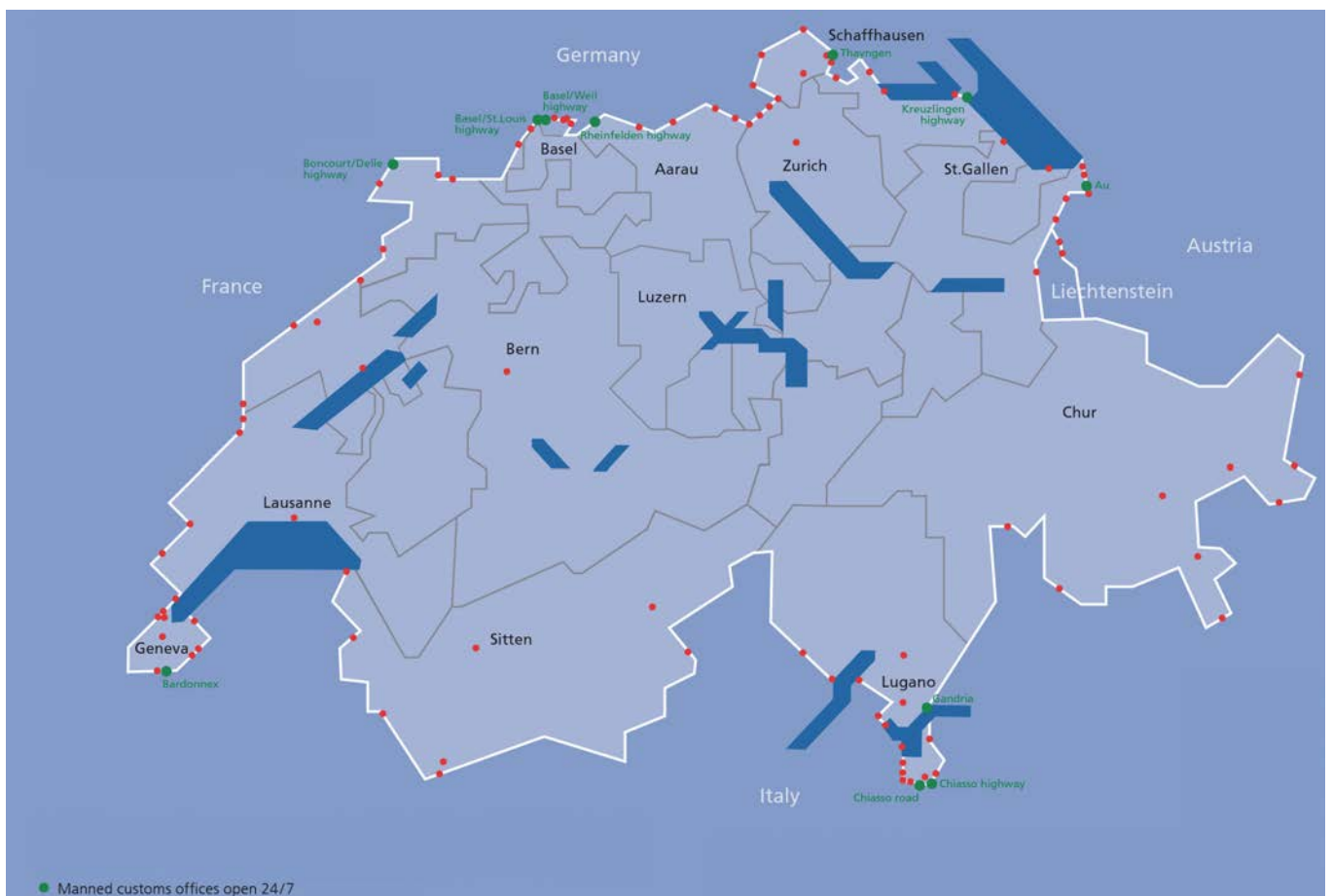
#### 4. TRUCK DRIVING PERMIT

Trucks and trailers weighing more than 3,5 tons are not allowed to travel in Switzerland without a special permit **during the night** (from 10.00 PM to 05.00 AM), **on Sundays and / or bank holidays**.

We ask you to be careful when planning **your itinerary and schedules in and out of Switzerland**, and to communicate all information as soon as possible in order to apply for driving permits. The Docks **decline all responsibility** for being held up at the border or being fined on Swiss territory.

**Artist is responsible for his ATA Carnet as Switzerland isn't part of the CEE (except for personal instruments).**

Only some specific Swiss customs are staff 24/7. Please make sur to use one of the ones listed on the map below (green) if you need to stamp ATA Carnet or other documents. Additional info on the authority's website: <https://www.offices.customs.admin.ch/>



## B. TECHNICAL ASPECTS

### 5. STAGE

Type :	Wood platform painted in black (forbidden to screw inside)
Weight support :	500kg/m <sup>2</sup>
Width total :	16,5 m
Between curtain :	12 m
Depth :	8 m
Depth with curtain :	7,5 m
Clearance :	5,4 m
Clearance under truss :	4,5 m
Height :	1 m

### 6. HALL

Width:	20 m
Depth (without stage):	10 m
Balcony :	open according to presales
Access to stage :	Door with stairs on stage right
Staircase :	1 (can be removed)

### 7. ELECTRICITY

All the electricity is in 240 / 400 Volts / 50Hz

Light :	1x CEE 125A 3 phases *
	1x CEE 63A 3 phases *
	1x CEE 32A 3 phases
	1x CEE 32A 3 phases
	Location : upstage right (stageplot p. 18)
	<i>* one of those must be kept for in-house use</i>
Sound :	1x CEE 63A 3 phases
	For PA, Monitor world, Backline, FOH
	1x CEE 32A 3 phases (guest)
	Location : stage left (stageplot p.18)

### 8. TRUSS

See stageplot on page 18 and LX plot on page 19.

Back truss (LX3)	Type QL52. Maximum load 2400 kg
Mid truss (LX2A & B)	Type QL30. Maximum load 4000kg
Front truss (LX1)	Type QL30. Maximum load 500kg
Hang points & maximum load per points	see stageplot on page 18.
Backdrop	Pipe of 10m width. Maximum load of 75kg
Sound hang :	2 points for the venue clusters (no motors)

Number, position & weight capacity of the truss cannot be modified and/or increased. No additional rigging points & no additional motors available.



## 9. SOUND

### PA

Loudspeakers :	2x	4 Arcs II L-Acoustics
	4x	Subs KS28 L-Acoustics
	2x	X12 L-Acoustics (out-fill)
	2x	A10 L-Acoustics (center-fill)
	3x	X8 L-Acoustics (balcony)
	2x	A10 L-Acoustics (balcony)

### FOH

Mixing desk :	1x	AVID S6L 24D
	1x	AVID E6L 112 Engine
	1x	AVID Stage64 48 input 16 analog output 16AES Output

### MONITOR WORLD

Mixing desk :	1x	Digico SD8
	1x	SD rack 48in/16out/16outAES
Wedges :	14x	X15 L-Acoustics (12 channels)
	2x	SB18 (2 channel)
Side-fills :	2x	2 A15 L-Acoustics
	2x	SB28 L-Acoustics

### AMPS

Main :	3x	LA12X
	2x	LA4X
Monitors :	8x	LA8
Processing :	2x	P1 L-Acoustics

### MULTICORE

FOH to MON :	4x	Cat 7 30m
	4x	BNC 75 Ohm
	1x	48 XLR Analog
	1x	8 XLR Analog (AES)

### MISCELLANEOUS

Microphones :	1x	AKG D112
	2x	AKG c451 (condenser)
	1x	Audix D6
	2x	Audix OM-7
	1x	Beyer M88
	2x	Beyerdynamic M201
	2x	Beyerdynamic MCE52 (clip mic)
	2x	Neumann KM 184
	2x	Pearl TL66 (condenser)
	2x	Sennheiser e906
	6x	Sennheiser e604 (clip mic)
	4x	Sennheiser e904 (clip mic)
	2x	Sennheiser MD421
	3x	Shure Beta 58
	2x	Shure Beta 57a
	2x	Shure Beta 52
	3x	Shure Beta 91
	14x	Shure SM 57

11x Shure SM 58  
 4x Shure SM 81 (condenser)  
 2x Shure HF UR4D SM 58 (wireless)

DI's :  
 4x BSS AR117 (activ)  
 14x BSS AR133 (activ)  
 3x Samson (activ)  
 2x radial Stagebug (passive)  
 2x Unika ISO-2

Mic stands :  
 22x Big  
 7x Straight roundbase  
 7x medium size  
 14x Small  
 3x Kick stand

*Adequate cabling for all the element mentioned above.*

## DJ

Mixing desks :  
 1x DJM 800  
 1x DJM 900 Nexus

Turntables :  
 2x Technics MK2  
 2x Technics MK5

CDJ :  
 2x CDJ 1000  
 2x CDJ 2000 Nexus

## **10. LIGHTS**

Lighting desks :  
 1x Grand MA3 light

Dimmers :  
 1x Avolite 48x2k

Multicore :  
 4x cat5e 30m Dry  
 4x DMX Dry

Network :  
 Art-Net network with  
 1x Gigacore 10 on stage  
 1x Luminode 12 on stage  
 1x Luminode 4 on stage  
 1x Gigacore 10 at FOH  
 1x Luminode 4 at FOH  
 2x Cat5e 30m for Art-Net

Projectors:  
 3x Atomic 3000  
 20x Ayrton Rivale Profile  
 12x Ayrton Nando Wash  
 4x MAC Aura (floor only)  
 6x MAC Quantum Profile (floor only)  
 10x PAR 64 1000W (solo)  
 10x Profile source 4's ETC  
 2x Series of 6 PAR cans  
 4x Stage Blinder Eurolite 2 lite (LED)  
 4x Stage Blinder Martin 4 lite (LED)



Haze machine : 1x MDG Atmosphere (manual control)

## 11. POSITIONS

### FOH

Position : 2/3 of the hall, 7m from the front of stage  
Dimensions : variable (thanks to stay as compact as possible)

### Monitors

Position : stage left

### Light

Position : 2/3 of the hall, 7m from the front of stage, next to FOH  
Dimensions : variable

## 12. PROJECTION

Location : front truss (short distance)  
Projector : Panasonic PT- RZ770 BE 7200 lumens  
Lense : Panasonic ET-DLE150 (1.3 – 1.9)  
Panasonic ET-DLE170 (1.7 – 2.4)  
Digital Interface box : Panasonic ET-YFB100G  
Screen : White. 488cm x 274cm (16' x 9')

## 13. FOLLOWSPOT

Followspot : Not possible. Too close from the stage (the distance between the back of the room and the stage is too short – 10m)  
Automated follow system: We have a Zactrack SMART tracking system solution available with 5x trackers.

## 14. SFX / MISCELLANEOUS

Laser, Pyro & SFX : subject to authorization from local authorities (such as public health department, police & firefighters). The specifications must arrive at least 14 days before the show. Otherwise, use is prohibited. Demonstration before doors required.  
Confettis : Cleaning fee of 100.- CHF applicable.  
Smoke / Haze machine : no restrictions.  
Smoking situation : smoking on stage and in the public area is prohibited.  
Curfew : no strict sound curfew. Backstage curfew upon agreed schedule (see itinerary sheet).

## 15. LOAD IN / LOAD OUT

Situation : On the left side of the building  
Load In / Out : Deck is 1m high (dim. 240cm width on 600cm long)  
Distance from stage is 6m flat push.  
Doors are 210 cm width on 200cm height.  
Alternative load In / Out : on the floor, through emergency doors.  
Doors are 180 cm width on 300cm height.

Ramp available : 80cm width on 330 cm height

## 16. RISERS

Available: 12x of 2x1m  
2x of 1x1m  
different height available  
On wheels : 28 cm / 40 cm / 60 cm  
Straight legs : 20 cm / 40 cm / 60 cm / 80 cm / 100 cm

## 17. SOUND RESTRICTIONS

Please be aware of the strict noise regulation applied in Switzerland. We thank you in advance for your good collaboration on this.

The Swiss Law limits the power amplification where the audience is the most exposed. The limit is **100 dB(A) L<sub>Aeq</sub> on 60 min, measured during the event.**

The person responsible for those measurements as well as the sound engineer of the stage will ensure that this law is duly respected. The sound level will be measured during all shows with the help of a soundmeter according to norm CEI n°651 and CEI n°804, calculated on a basis of 60 minutes. Controls might be done by authorities.

**The Artist and his staff, including his sound engineer, shall respect this law.**

## 18. MERCHANDISING

Merch type: self-vends (sold by artist / crew)

Fee: No rate / no fee applicable on sales.

Local seller: Possible, at artist costs. Price is 25.- CHF per hour - from seller's arrival on site till end of the duty. To be paid cash to the seller at the end of his/her duty. Thanks to advice well in advance.

Delivery / pick-up: Possible. Only during office hours | Mon > Fri (except bank holidays) from 9.30 till 12.00 and from 13.30 till 17.30. All related costs (shipping, VAT, customs, pick-up...) must be covered by the artist and additional fee might be applicable in case of any extra work related to delivery required (admin and/or logistic). To be discussed during the advance.

Delivery address: Docks / Fondation pour les Musiques Actuelles, Avenue de Sévelin 34, 1004 Lausanne

DOS Contact: To be confirmed during the advance.

Location: Merch area is located in the main hall and cannot be moved.

Dimension: Space is limited to 1.5m (depth) on 5m (width). No stock room nor extra space available.

Material: 2 Desks, wall grids, hangers, lights, electricity available.

Light:	dimnable light to reduce the light at minimum during the shows.
Electricity:	1 plug (13A) – adapters available
Local currency:	Swiss francs (CHF). Banknotes of 10 / 20 / 50 / 100 / 200 / 1000 (not accepted at the venue) & coins of 5cts / 10cts / 20cts / 50cts / 1 / 2 / 5. Please note you'll only be able to exchange bills abroad (coins are generally not accepted from non-Swiss banks).
Float:	available if needed. We can give you a float. Thanks to confirm on DOS during the afternoon.
Machine:	No card machine available on site.
WIFI:	SSID - DocksProd // Pswd: welcomelesdocks



## C. SECURITY

### 19. MISCELLANEOUS

General :	policies & safety plan are established with local authorities and adapted to the risk level analysis.
Crew :	professional (authorization delivered by police department) and used to work at the venue. Wearing blue jackets, easily identifiable.
Number & positions :	adapted to venue and presales, rules established by local authorities. Key positions always checked. Map on request.
Audience entrance :	audience is being searched (pat down) when entering the venue and usual prohibited items are confiscated (such as weapons or dangerous items, bottles, glasses, sharp items, spray, fireworks, professional cameras without accreditation). Handheld metal detector available if suspicion. Bags allowed but searched, large items must be checked in the cloakroom.
Bars :	plastic cups for the drinks (no bottles in audience).
Emergencies :	firefighters headquarters, hospital satellite & police station located less than 2km away (map on page 22).
Local numbers :	Police 117 / Firefighters 118 / Ambulance 144
Barricades :	Mojo type crash barricade available. Distance from stage edge to barricade is max. 60cm.
Fire extinguishers :	Various extinguishers available (FOH, stage, backstage...). Position established by local authorities (cannot be changed – map on p.14).
Communication :	Security crew members are all equipped with Walkie-Talkie and small flash lights. All bars are equipped with emergency press buttons.
Showstop procedure :	Available upon request.
Emergencies exits :	Please see map on page 14.
Law enforcement :	The venue is located in a public area and we are not allowed to restrain the access & footpath. No sturdy materials to limit the area. No CCTV available on site. No uniformed law enforcement / police officers available on site. No escorts available.
Credentials :	We can work with artist laminates and/or provide venue wristbands. List of workers available on request.
M&G / Signing sessions : VIP's / Misc	Possible. Details and organization must be discussed.



## 20. MEDICALS EMERGENCIES SERVICES IN LAUSANNE

Hospital	CHUV - Centre hospitalier universitaire vaudois Rue du Bugnon 46 1005 Lausanne Tel : +41 21 314 11 11 <i>mon-sun 24/24</i>  Permanence médicale du Flon Batiment les Mercier A, Voie du Chariot 4 1003 Lausanne Tel : +41 21 314 90 90 <i>mon-sat 7am - 9 pm / sun 9am - 7pm</i>
Doctor on call	Centrale des médecins de garde Tel : +41 0848 133 133 <i>mon-sun 24/24</i>
Doctor on request (mobile app) <i>come at the venue / hotel</i>	DOCADOM <a href="https://docadom.ch/en/">https://docadom.ch/en/</a> <i>mon-sun 9am – 7.30pm</i>
Dentist	Ardentis Clinique dentaire Lausanne SA Batiment les Mercier A, Voie du Chariot 4 1003 Lausanne Tel : +41 58 234 00 20 <i>mon-fri 7.30am – 7pm / sat 9am – 4pm</i>  Dentiste de garde – On call Tel : +41 0848 133 133 <i>mon-sun 8am – 10pm</i>
Pharmacies	Pharmacie EuroFlon SA Metro station Flon Place de L'Europe 5 1003 Lausanne Tel : +41 21 318 73 10 <i>mon-thu 7am - 9pm / fri-sat 8am – 10pm / sun 8am – 9pm</i>  Pharmacie 24 SA Avenue de Montchoisi 3 1006 Lausanne <i>mon-sun 8am - 12pm</i>

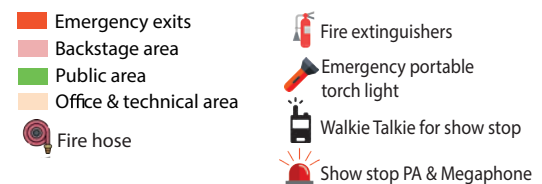
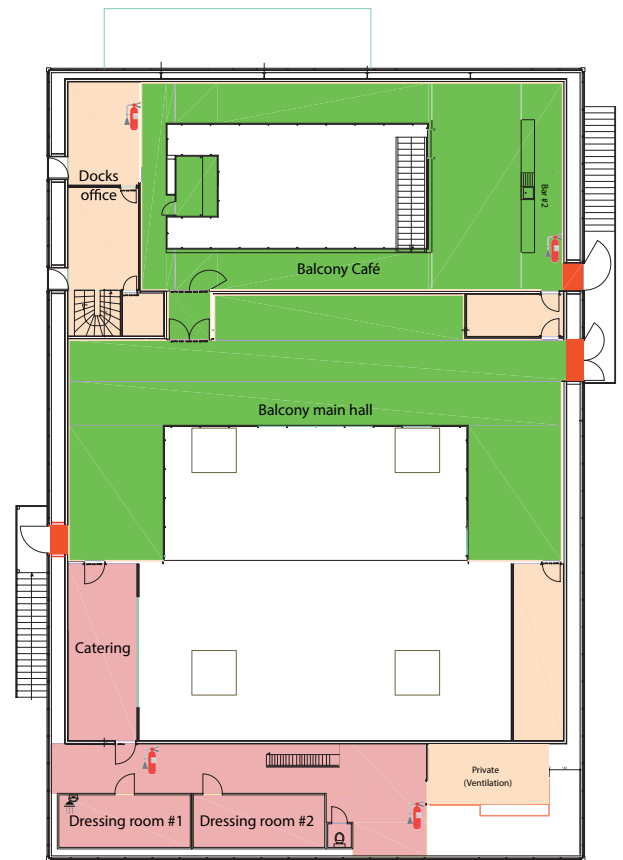
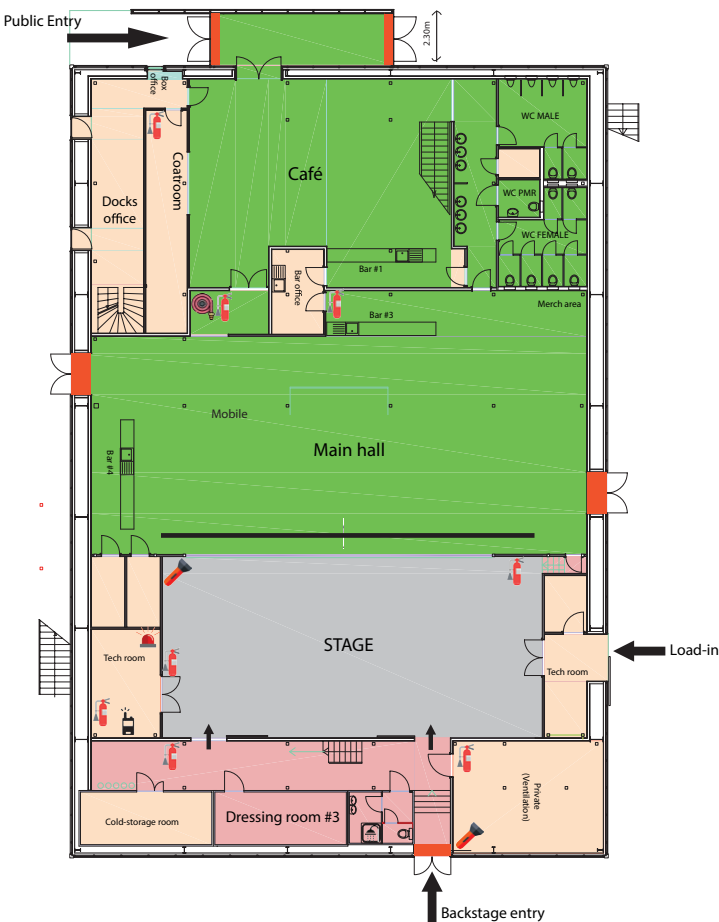
*All medical services are subject to availability and are not covered by the venue.*

## D.HOSPITALITY

### 21. AREAS OF THE VENUE

Ground floor

First floor



### 22. PRODUCTION OFFICE

Office : No specific room, but desk located in the backstage area  
 Phone : no (available in Docks office)  
 Fax : no (available in Docks office)  
 Internet : WiFi available in the whole building

### 23. DRESSING ROOMS

General information : 3 dressing rooms available (one with shower)  
 Situation : 2 on the first floor, 1 on stage level  
 WC and shower : 2 showers and 2 WC

### 24. ARTIST CATERING

General information : catering / meals in house (upon agreement)  
 Location : room located in the backstage area  
 18 people can be seated at the same time

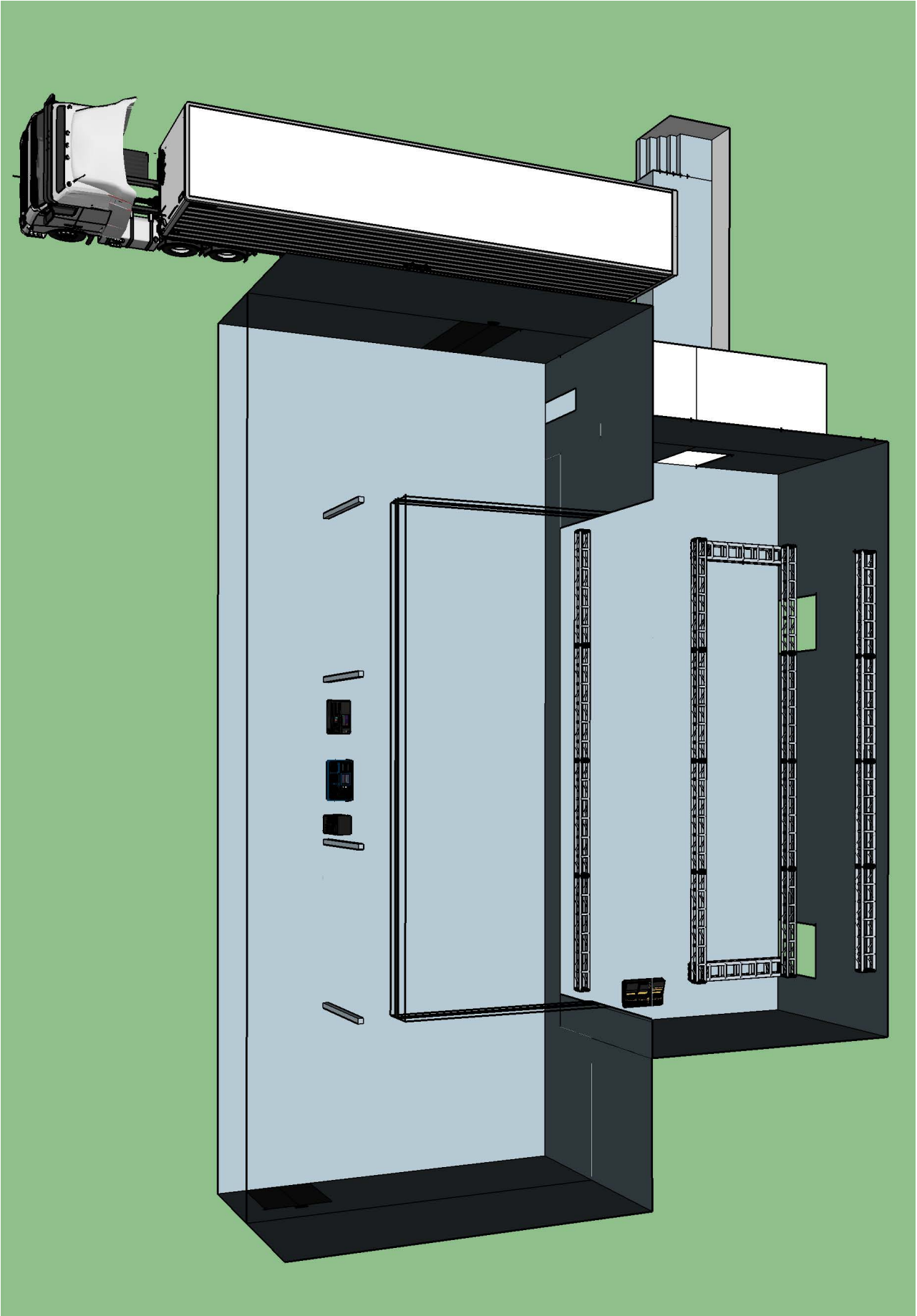
## 25. LAUNDRY

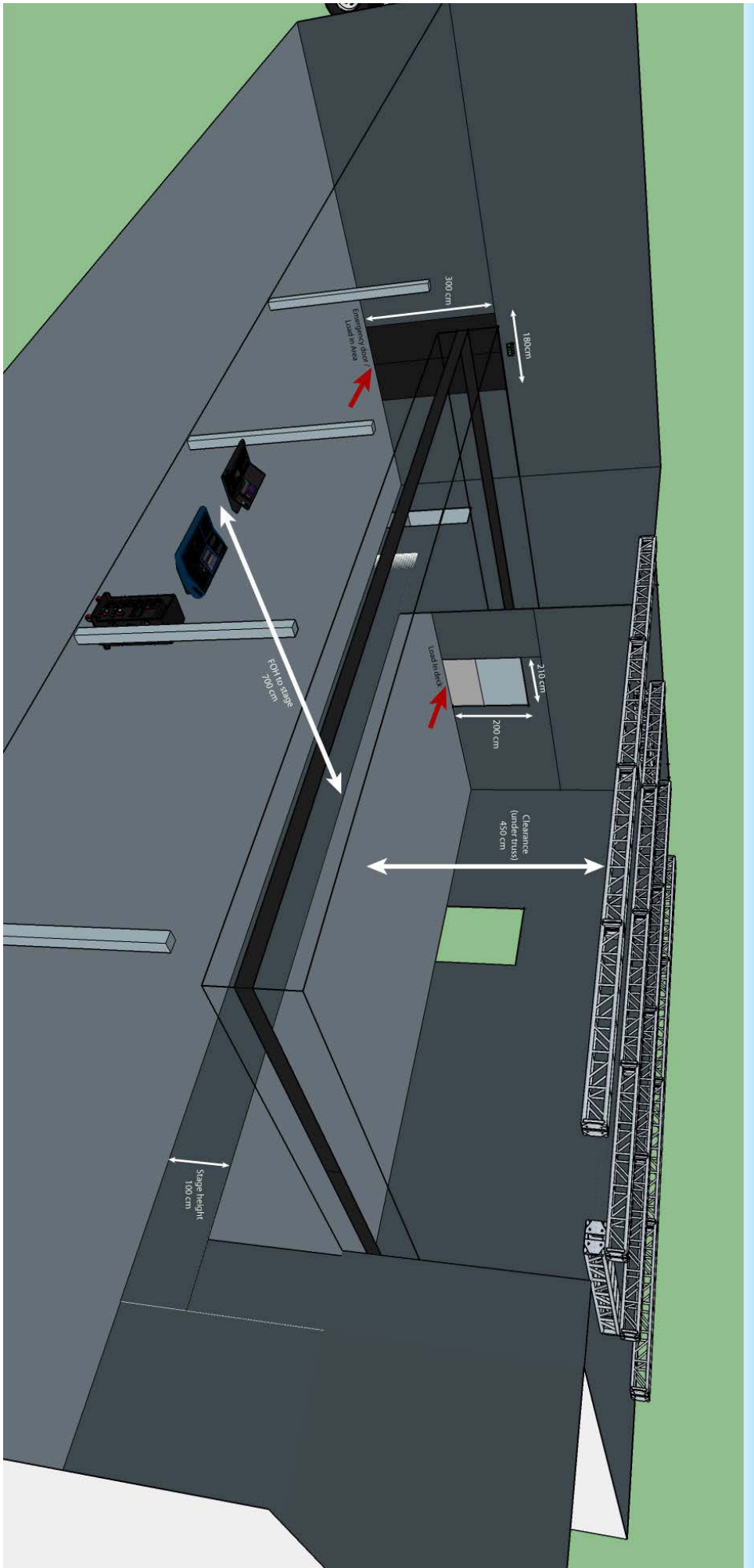
Situation :	No laundry available on site. <i>Dry cleaning or other options on request, at artist cost.</i>
Misc :	Iron, steamer & ironing board available.

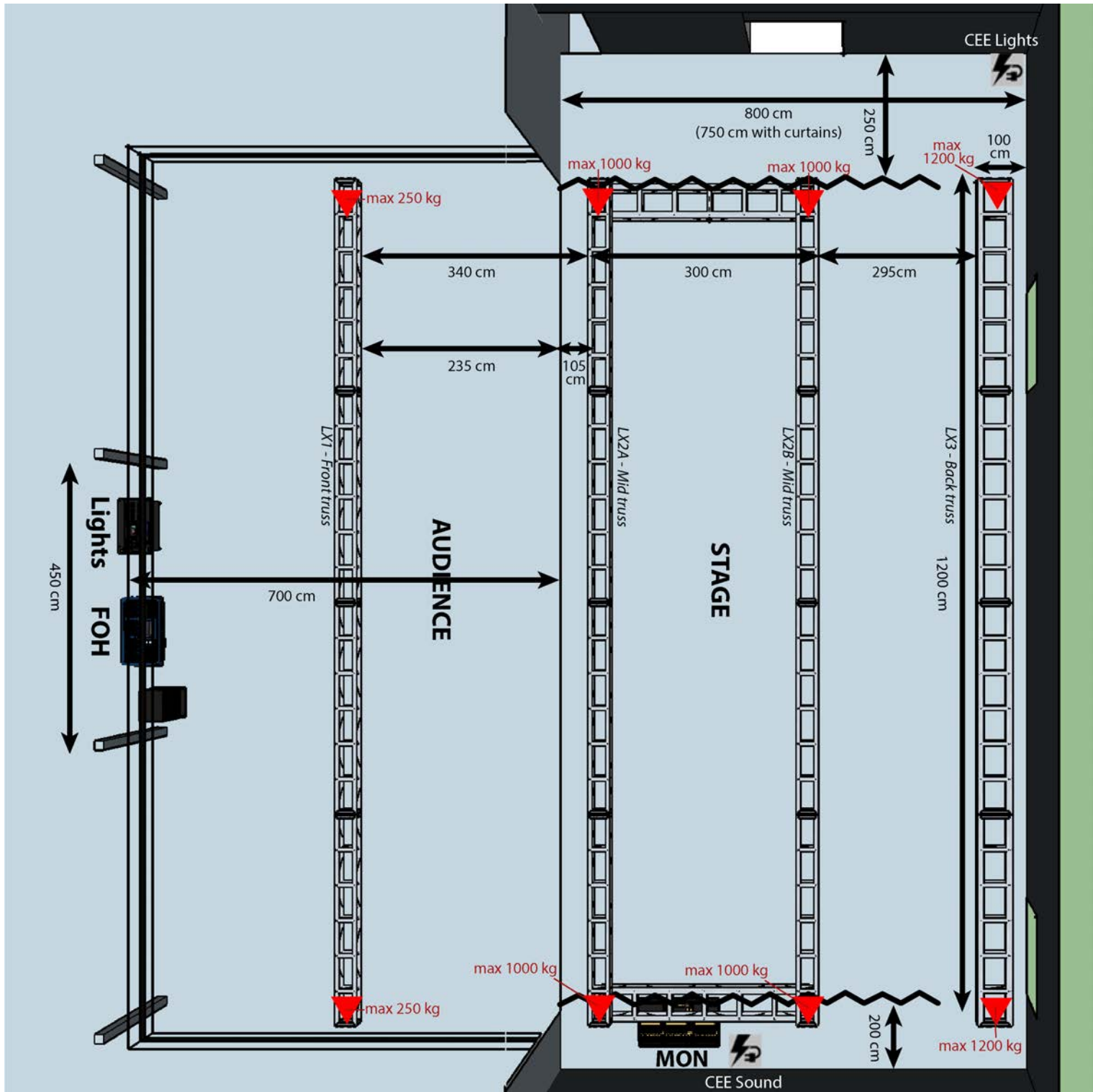
## 26. MISCELLANEOUS

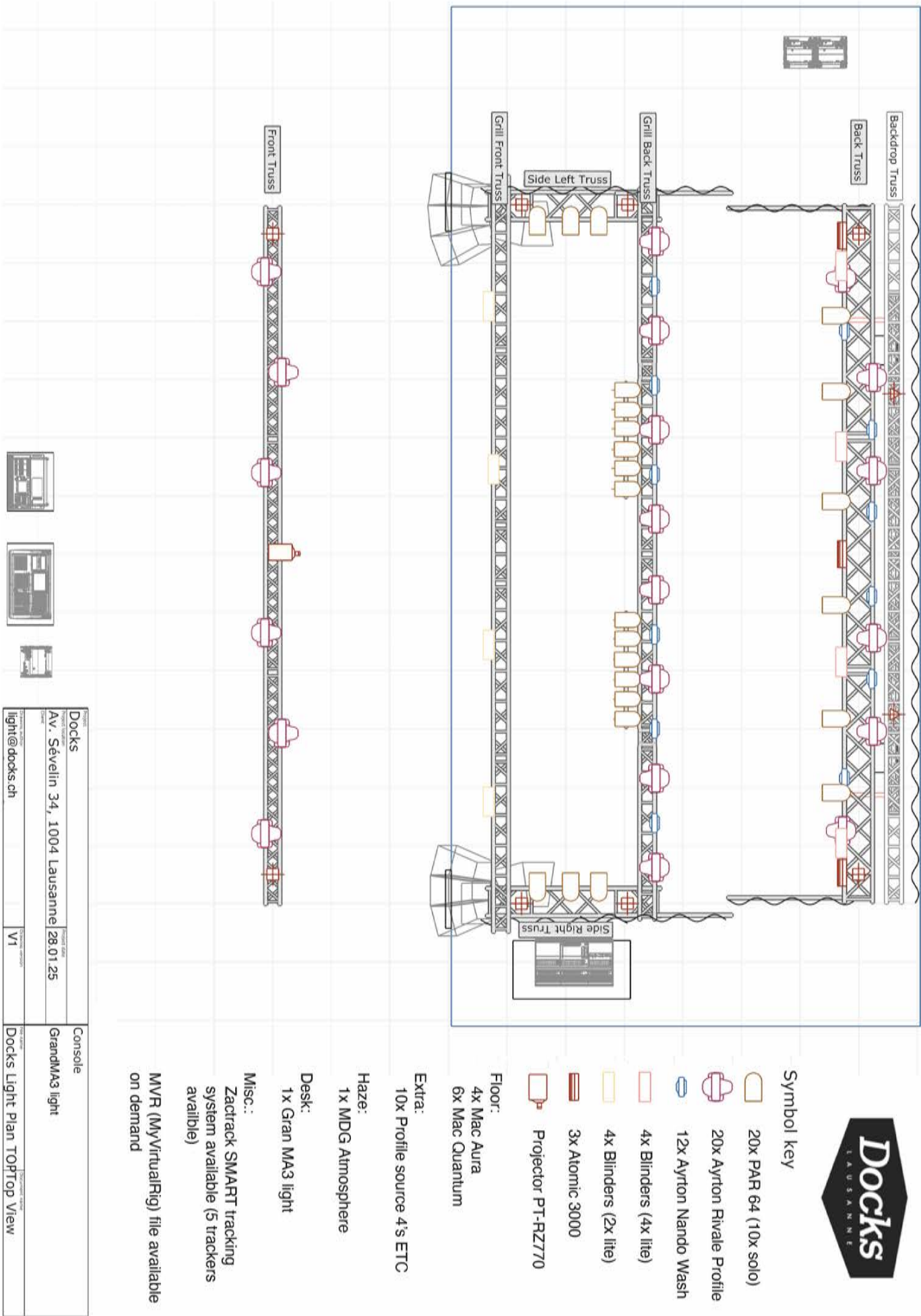
Runner :	upon agreement.
Hotel :	upon agreement. <i>If not included in the offer, don't hesitate to get in touch with us if you need any advice.</i>
Towels :	Shower towels & dark stage towels available.
Tourism :	Local map & info available in the dressing rooms.
Postcards :	Available in the backstage area. Put them in the red mailbox and we'll send them for you.
Ecological footprint:	We're trying to limit our footprint by reducing food wasting / garbage / single use items / electricity wasting. We aim to provide less meat (only served at dinner), provide large part of our electricity needs through solar panels and try to separate & recycle as much as we can. We also do have water dispenser available (cool, sparkling & still). PET bottle also available (well recycled in Switzerland). Every item (such as glasses, plates, bowls, cups, silverware...) are re-usable ones. Thanks for your collaboration on this topic.















## 28. PICTURES OF THE STAGE



29. EMERGENCIES SERVICES MAP

