



**Technical  
Rider**

## Table of contents

<b>A. GENERAL</b> .....	<b>3</b>
1. Address & Contacts .....	3
2. About the venue .....	3
3. Access .....	4
4. Parking.....	5
5. Truck driving permit.....	5
<b>B. TECHNICAL ASPECTS</b> .....	<b>6</b>
6. Stage.....	6
7. Hall .....	6
8. Electricity .....	6
9. Truss .....	6
10. Sound .....	7
11. Lights .....	8
12. Positions.....	9
13. Projection.....	9
14. Followspot.....	9
15. SFX / Miscellaneous.....	9
16. Load In / Load Out.....	9
17. Risers.....	9
18. Sound restrictions .....	10
19. Merchandising.....	10
<b>C. SECURITY</b> .....	<b>11</b>
20. Miscellaneous .....	11
21. Medicals Emergencies services in Lausanne.....	12
<b>D. HOSPITALITY</b> .....	<b>13</b>
22. Areas of the venue .....	13
23. Production office .....	13
24. Dressing rooms .....	13
25. Artist catering.....	13
26. Laundry.....	14
27. Miscellaneous .....	14
<b>E. STAGEPLOTS &amp; 3D VIEWS</b> .....	<b>15</b>
<b>F. MISCELLANEOUS</b> .....	<b>19</b>
28. Areas of venue & Pictures.....	19
29. Pictures of the stage.....	20
30. Emergencies services map .....	21

## A. GENERAL

### 1. ADDRESS & CONTACTS

Address : **LES DOCKS**  
Av. de Sévelin 34 (zone B)  
1004 Lausanne  
Switzerland

Phone : +41 21 623 44 44  
Fax : +41 21 623 44 45  
Website : [www.docks.ch](http://www.docks.ch)

**Director & Head of program**  
Phone : +41 21 623 44 44  
Email : [laurence@docks.ch](mailto:laurence@docks.ch)

**Production Manager**  
Phone : +41 78 750 44 41  
Email : [alexandre@docks.ch](mailto:alexandre@docks.ch)

**Technical & sound engineer**  
Phone : +41 78 640 46 35  
Email : [technic@docks.ch](mailto:technic@docks.ch)

**Light engineer**  
Phone : +41 79 381 90 54  
Email : [light@docks.ch](mailto:light@docks.ch)

**Head of communication**  
Phone : +41 78 750 44 44  
Email : [communication@docks.ch](mailto:communication@docks.ch)

**Head of Security**  
Phone : +41 78 750 44 43  
Email : [securite@docks.ch](mailto:securite@docks.ch)

### 2. ABOUT THE VENUE

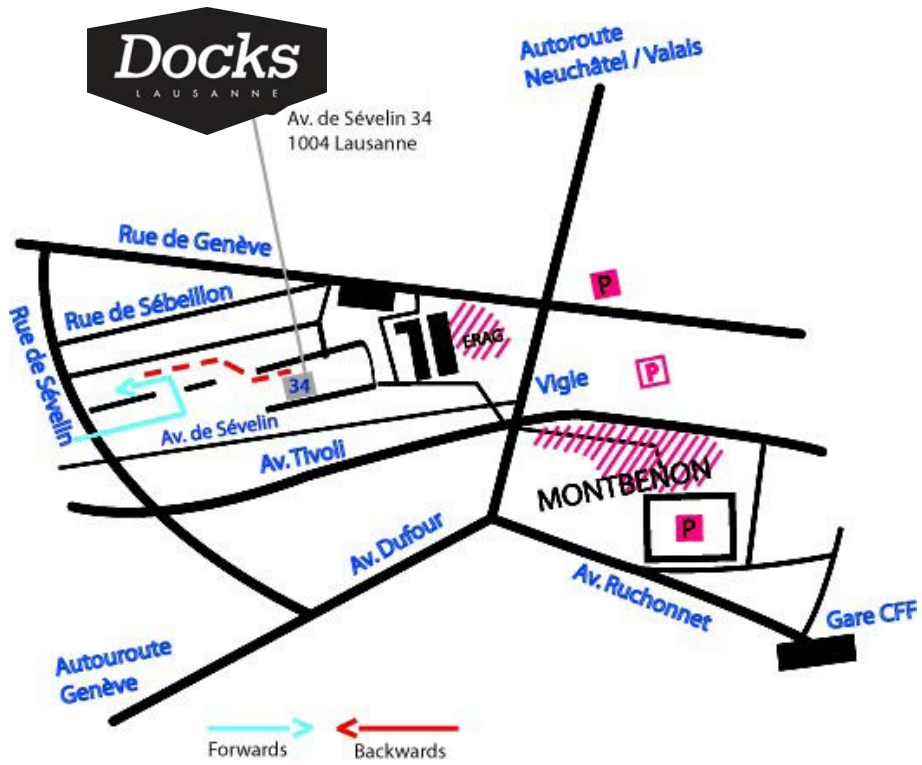
Type : Live Music Venue  
(*standing, no seats*)

Capacity : 1010 people (inc. guests)

Age admission : 16 years old (people under the age of 16 must be accompanied by a parent or a legal representative. Admission is prohibited to children under 4 years old - unless stated otherwise.)

PRM : Access to the concert hall is on flat ground. Wheelchair's adapted toilet is available for audience. No specific viewing platform.

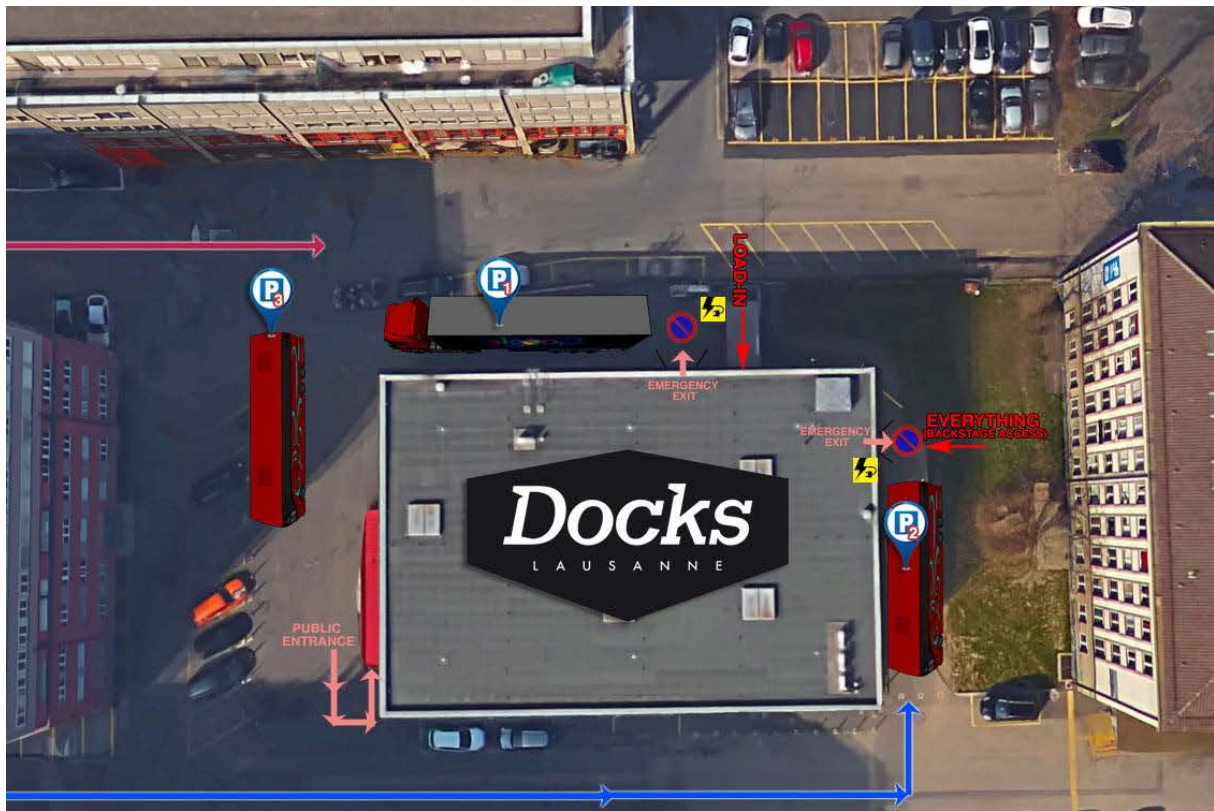
### 3. ACCESS



Nightliners with trailer should drive to loading ramp backwards (as shown on the above map)



#### 4. PARKING



Slot 1 : Trucks / Nightliners (Load In area) | Slot 2 : Nightliners (without trailer)  
Slot 3 : Nightliners (only if slots 1&2 are already used)

*Thanks to keep the corridor for emergency doors free (at least 1h before doors opening).*

*Please discuss availability & arrival / departure schedule with Docks Production manager. Electricity available upon arrival.*

#### 5. TRUCK DRIVING PERMIT

Trucks and trailers weighing more than 3,5 tons are not allowed to travel in Switzerland without a special permit **during the night** (from 10.00 PM to 05.00 AM), **on Sundays and / or bank holidays**.

We ask you to be careful when planning **your itinerary and schedules in and out of Switzerland**, and to communicate all information as soon as possible in order to apply for driving permits. The Docks **decline all responsibility** for being held up at the border or being fined on Swiss territory.

**Artist is responsible for his ATA Carnet as Switzerland isn't part of the CEE (except for personal instruments).**

## B. TECHNICAL ASPECTS

### 6. STAGE

Type :	Wood platform painted in black (forbidden to screw inside)
Weight support :	500kg/m <sup>2</sup>
Width total :	16,5 m
Between curtain :	12 m
Depth :	8 m
Depth with curtain :	7,5 m
Clearance :	5,4 m
Clearance under truss :	4,5 m
Height :	1 m

### 7. HALL

Width:	20 m
Depth (without stage):	10 m
Balcony :	opened depending on presales
Access to stage :	Door with stairs on stage right
Staircase :	1 (can be removed)

### 8. ELECTRICITY

All the electricity is in 240 / 400 Volts / 50Hz

Light :	1x CEE 125A 3 phases * 1x CEE 63A 3 phases * 1x CEE 32A 3 phases 1x CEE 32A 3 phases Location : upstage right (stageplot p. 17) <i>* one of those must be kept for in-house use</i>
Sound :	1x CEE 63A 3 phases For PA, Monitor world, Backline, FOH 1x CEE 32A 3 phases (guest) Location : stage left (stageplot p.17)

### 9. TRUSS

See stageplot on page 17 and LX plot on page 18.

Back truss (LX3)	Type QL52. Maximum load 2400 kg
Mid truss (LX2A & B)	Type QL30. Maximum load 4000kg
Front truss (LX1)	Type QL30. Maximum load 500kg.

Hang points & maximum load per points see stageplot on page 17.

Sound hang : 2 points for the venue clusters (no motors)

Number, position & weight capacity of the truss can not be modify and/or increased. No additional rigging points & no additional motors available.

## 10. SOUND

### PA

Loudspeakers :                   2x 4 Arcs II L-Acoustics  
  4x Subs KS28 L-Acoustics  
  2x X12 L-Acoustics (out-fill)  
  3x X8 L-Acoustics (balcony)  
  2x MTD 112 L-Acoustics (balcony)

### FOH

Mixing desk :                   1x Midas Pro 3 Series  
  1x DL251 (48 in / 16 out)  
  1x DL155 (8 in / 8 out / 8 AES in & out)

FX :                                1x TC M3000 (reverb)  
  1x TC D2 (delay)  
  4x Dbx 160A (compressor)

### MONITOR WORLD

Mixing desk :                   1x Digico SD8  
  1x Madi rack (48 in / 24 out)

Wedges :                         14x X15 L-Acoustics (12 channels)  
  2x SB18 (2 channel)

Side-fills :                     2x A15 L-Acoustics  
  2x SB28 L-Acoustics

### AMPS

Main :                            3x LA12X  
  2x LA4X

Monitors :                     8x LA8

Processing :                    2x P1 L-Acoustics

### MULTICORE

FOH to MON :                 4x Cat 5e 30m  
  4x BNC 75 Ohm  
  1x 48 XLR Analog  
  1x 8 XLR Analog (AES)

### MISCELLANEOUS

Microphones :                 1x AKG D112  
  2x Shure Beta 91  
  10x Shure SM 57  
  2x Shure beta 57a  
  2x Shure beta 52  
  1x Beyer M88  
  7x Shure SM 58  
  2x Shure beta 58  
  2x Sennheiser e906  
  2x Sennheiser MD421  
  2x AKG c451 (condenser)  
  4x Shure SM 81 (condenser)  
  2x Pearl TL66 (condenser)  
  7x Sennheiser e604 (clip mic)  
  2x Beyerdynamic MCE52 (clip mic)  
  1x Beyerdynamic M201  
  2x Audix OM-7  
  2x Shure HF UR4D SM 58 (wireless)

DI's : 4x BSS AR117 (activ)  
12x BSS AR133 (activ)  
3x Samson (activ)  
2x radial Stagebug (passive)

Mic stands : 22x Big  
13x Small

*Adequate cabling for all the element mentionned above.*

## DJ

Mixing desks : 1x DJM 800  
1x DJM 900 Nexus

Turntables : 2x Technics MK2  
2x Pioneer PLX 1000

CDJ : 2x CDJ 1000  
2x CDJ 2000 Nexus

## **11. LIGHTS**

Lighting desks : 1x Grand MA2 Ultra light

Dimmers : 2x Avolite 48x2k  
Dimmer Zero88 6x2 KW / DMX + 6 faders / 1 master

DMX splitters : Avolite rack (8 in / 2 out)

Projectors:  
1x serie of ACL 1000W  
7x Fresnel 1000W  
2x series of 6 PAR cans  
10x PAR 64 1000W (solo)  
12x Profile source 4's ETC  
6x PC 2000W  
4x Stage Blinder Martin 4 lite (LED)  
4x Stage Blinder Eurolite 2 lite (LED)  
12x Mac Aura  
2x St rob Atomic 3000  
12x Mac Quantum Profile

Haze machine : 1x MDG Atmosphere (controler DMX)

Multicore : 4x cat5e 30m  
4x DMX\*  
*\* 2x must be kept for in-house use*



## 12. POSITIONS

### FOH

Position : 2/3 of the hall, 7m from the front of stage  
Dimensions : variable (thanks to stay as compact as possible)

### Monitors

Position : stage left

### Light

Position : 2/3 of the hall, 7m from the front of stage, next to FOH  
Dimensions : variable

## 13. PROJECTION

Possibility : from the balcony, short distance  
Projector : Panasonic PT- RZ770 BE 7200 lumens  
Lense : Panasonic ET-DLE170 (1.7 – 1.9)  
Digital Interface box : Panasonic ET-YFB100G  
Screen : White. 488cm x 274cm (16' x 9')

## 14. FOLLOWSPOT

Followspot : Not possible. Too close from the stage (the distance between the back of the room and the stage is too short – 10m)

## 15. SFX / MISCELLANEOUS

Laser, Pyro & SFX : subject to authorization from local authorities (such as public health department, police & firefighters). The specifications must arrived at least 14 days before the show. Otherwise, use is prohibited. Demonstration before doors required.

Confettis : Cleaning fee of 100.- CHF applicable.

Smoke / Haze machine : no restrictions.

Smoking situation : smoking on stage and in the public area is prohibited.

Curfew : no strict sound curfew. Backstage curfew upon agreed schedule (see itinerary sheet).

## 16. LOAD IN / LOAD OUT

Situation : On the left side of the building

Load In / Out : Deck is 1m high (dim. 240cm width on 600cm long)  
Distance from stage is 6m flat push.  
Doors are 210 cm width on 200cm height.

Alternative load In / Out : on the floor, through emergency doors.  
Doors are 180 cm width on 300cm height.

Ramp available : 80cm width on 330 cm height

## 17. RISERS

Available: 12 of 2x1m  
different heigh available (on wheels : 28 cm, 40 cm, 60 cm / floor : 20cm, 80 cm, 1m)

## 18. SOUND RESTRICTIONS

Please be aware of the strict noise regulation applied in Switzerland. We thank you in advance for your good collaboration on this.

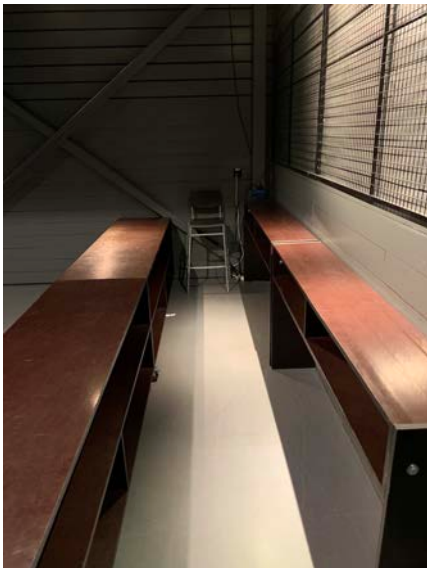
The Swiss Law limits the power amplification where the audience is the most exposed. The limit is **100 dB(A) L<sub>Aeq</sub> on 60 min, measured during the show.**

The person responsible for those measurements as well as the sound engineer of the stage will insure that this law is duly respected. The sound level will be measured during all shows with the help of a soundmeter according to norm CEI n°651 and CEI n°804, calculated on a basis of 60 minutes.

**The Artist and his staff, including his sound engineer, shall respect this law.**

## 19. MERCHANDISING

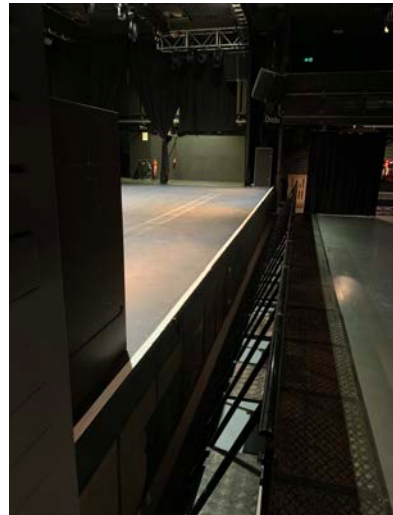
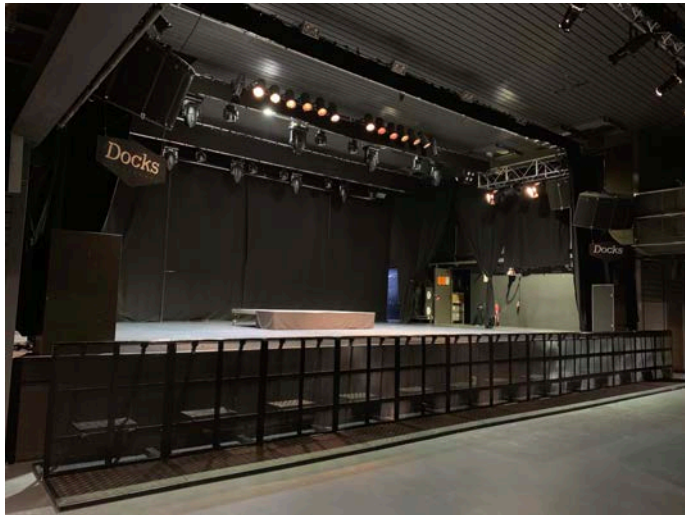
General information :	to be sold by artist. Local merch seller could be provided. Costs is 25.- CHF per hour, cash.
Rate :	no rate
Location :	back of the venue (can not be moved)
Dimensions :	1.6 m <i>d</i> on 5m <i>w</i> (can not be extended)
Available :	Tables, wall grid, hangers, lights
Electricity :	1 plug (13A) – adapters available



## C. SECURITY

### 20. MISCELLANEOUS

General :	policies & safety plan are established with local authorities and adapted to the risk level analysis.
Crew :	professional (autorisation delivered by police departement) and used to work at the venue. Wearing black uniform, easily identifiable.
Number & positions :	adapated to venue and presales, rules established by local authorities. Key positions always checked. Map on request.
Audience entrance :	audience is being searched (pat down) when entering the venue and usual prohibited items are confiscated (such as weapons or dangerous items, bottles, glasses, sharp items, spray, fireworks, professional cameras without accreditation). Handheld metal detector available if suspicion. Bags allowed but searched, large items must be checked in the cloakroom.
Bars :	plastic cups for the drinks (no bottles in audience).
Emergencies :	firefighters headquarters, hospital satelite & police station located less than 2km away (map on page 21).
Local numbers :	Police 117 / Firefighters 118 / Ambulance 144
Barricades :	Mojo type crash barricade available. Distance from stage edge to barricade is max. 60cm.
Fire extinguishers :	Various extinguishers available (FOH, stage, backstage...). Position established by local authorities (can not be changed – map on p.13).
Communication :	Security crew members are all equiped with Walkie-Talkie and small flash lights. All bars are equiped with emergency press buttons.
Showstop procedure :	Available upon request.
Emergencies exits :	Please see map on page 13.
Law enforcement :	The venue is located in a public area and we are not allowed to restrain the access & footpath. No sturdy materials to limit the area. No CCTV available on site. No uniformed law enforcement / police officers available on site. No escorts available.
Credentials :	We can work with artist laminates and/or provide venue wristbands. List of workers available on request.
M&G / Signing sessions : VIP's / Misc	Possible. Details and organisation must be discussed.



## 21. MEDICALS EMERGENCIES SERVICES IN LAUSANNE

Hospital	CHUV - Centre hospitalier universitaire vaudois Rue du Bugnon 46 1005 Lausanne Tel : +41 21 314 11 11 <i>mon-sun 24/24</i>  Permanence médicale du Flon Batiment les Mercier A, Voie du Chariot 4 1003 Lausanne Tel : +41 21 314 90 90 <i>mon-sat 7am - 9 pm / sun 9am - 7pm</i>
Doctor on call	Centrale des médecins de garde 1005 Lausanne Tel : +41 0848 133 133 <i>mon-sun 24/24</i>
Dentist	Ardentis Clinique dentaire Lausanne SA Batiment les Mercier A, Voie du Chariot 4 1003 Lausanne Tel : +41 58 234 00 20 <i>mon-fri 7.30am – 7pm / sat 9am – 4pm</i>  Dentiste de garde – On call Tel : +41 0848 133 133 <i>mon-sun 8am – 10pm</i>
Pharmacies	Pharmacie EuroFlon SA Metro station Flon Place de L'Europe 5 1003 Lausanne Tel : +41 21 318 73 10 <i>mon-thu 7am - 9pm / fri-sat 8am – 10pm / sun 8am – 9pm</i>  Pharmacie 24 SA Avenue de Montchoisi 3 1006 Lausanne <i>mon-sun 8am - 12pm</i>

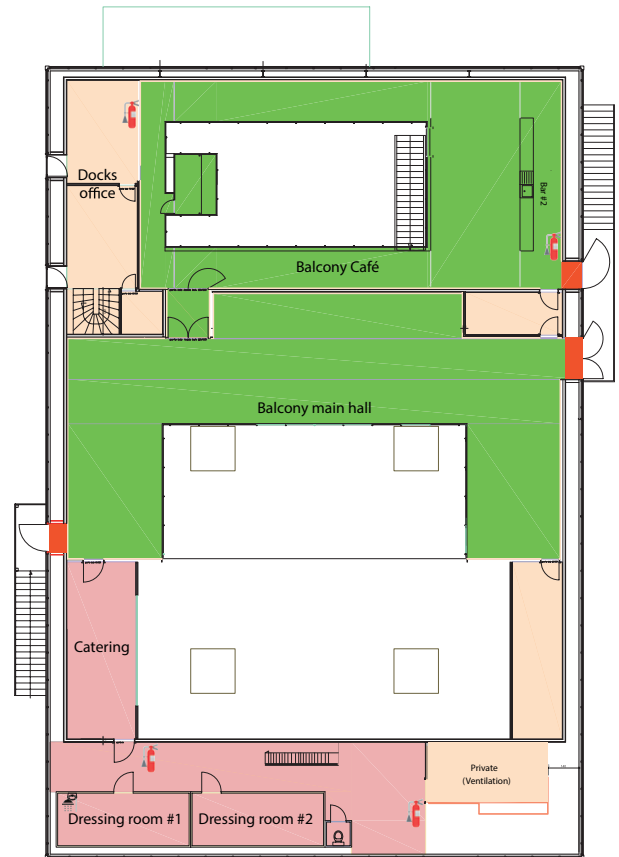
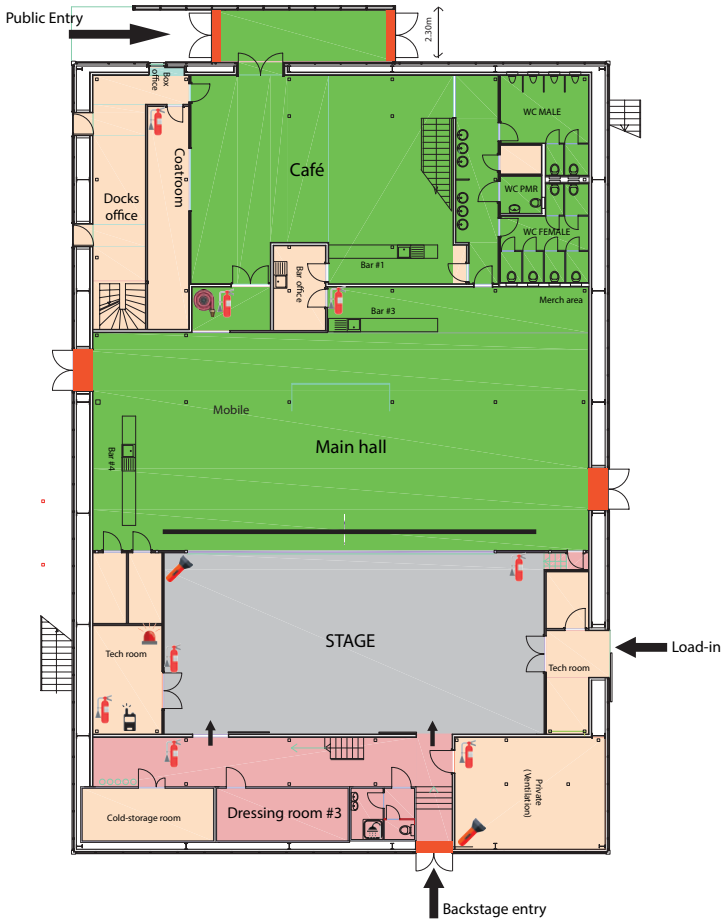
*All medical services are subject to availability and are not covered by the venue.*



## D. HOSPITALITY

### 22. AREAS OF THE VENUE

Ground floor

First floor



-  Emergency exits
-  Backstage area
-  Public area
-  Office & technical area
-  Fire hose
-  Fire extinguishers
-  Emergency portable torch light
-  Walkie Talkie for show stop
-  Show stop PA & Megaphone

### 23. PRODUCTION OFFICE

Office : desk located in the backstage area  
 Phone : no (available in Docks office)  
 Fax : no (available in Docks office)  
 Internet : WiFi available in the whole building

### 24. DRESSING ROOMS

General informations : 3 dressing rooms available (one with shower)  
 Situation : 2 on the first floor, 1 on stage level  
 WC and shower : 2 showers and 2 WC

### 25. ARTIST CATERING

General information : catering / meals in house (upon agreement)  
 Location : room located in the backstage area  
 16 people can be seated at the same time

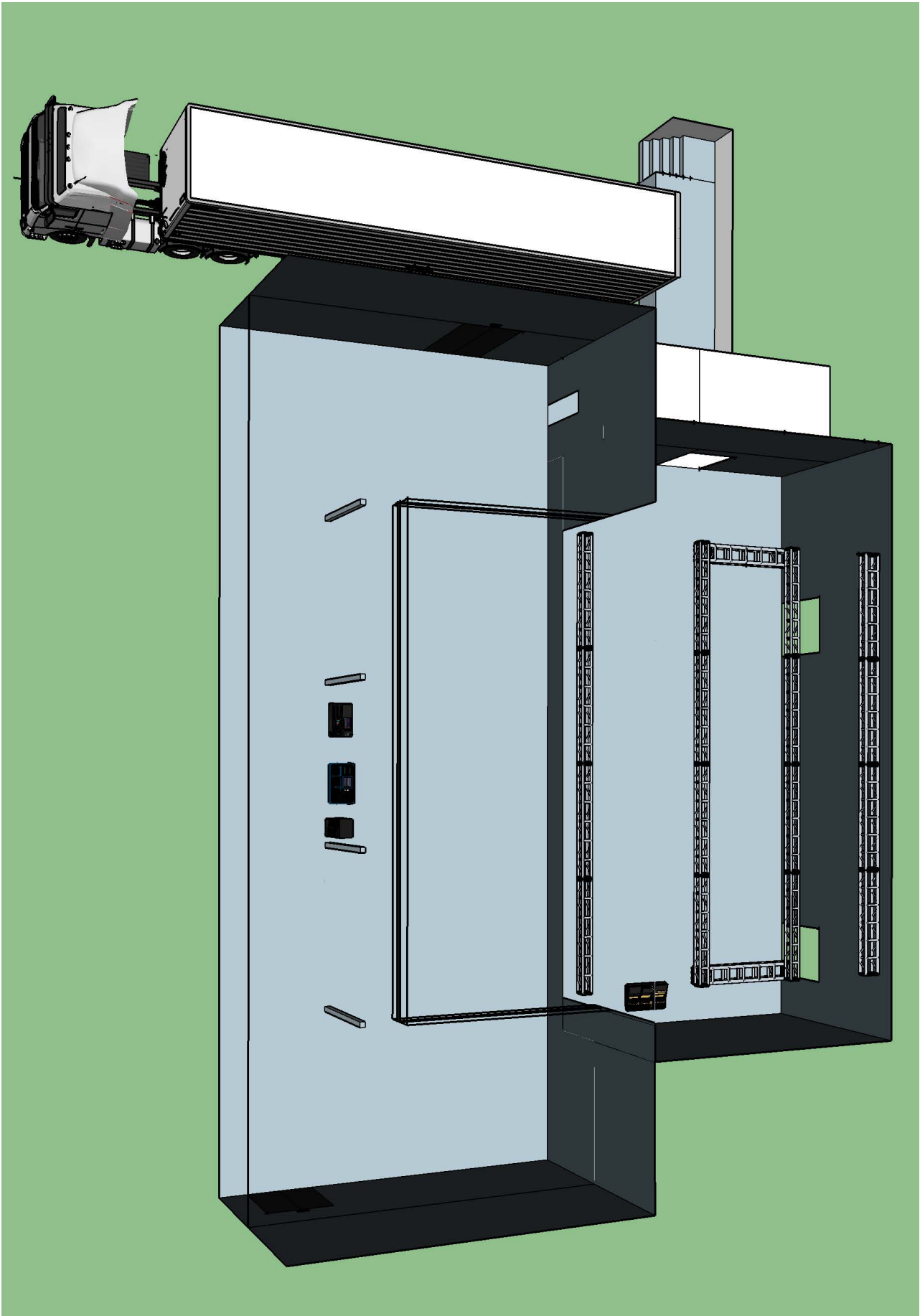
## 26. LAUNDRY

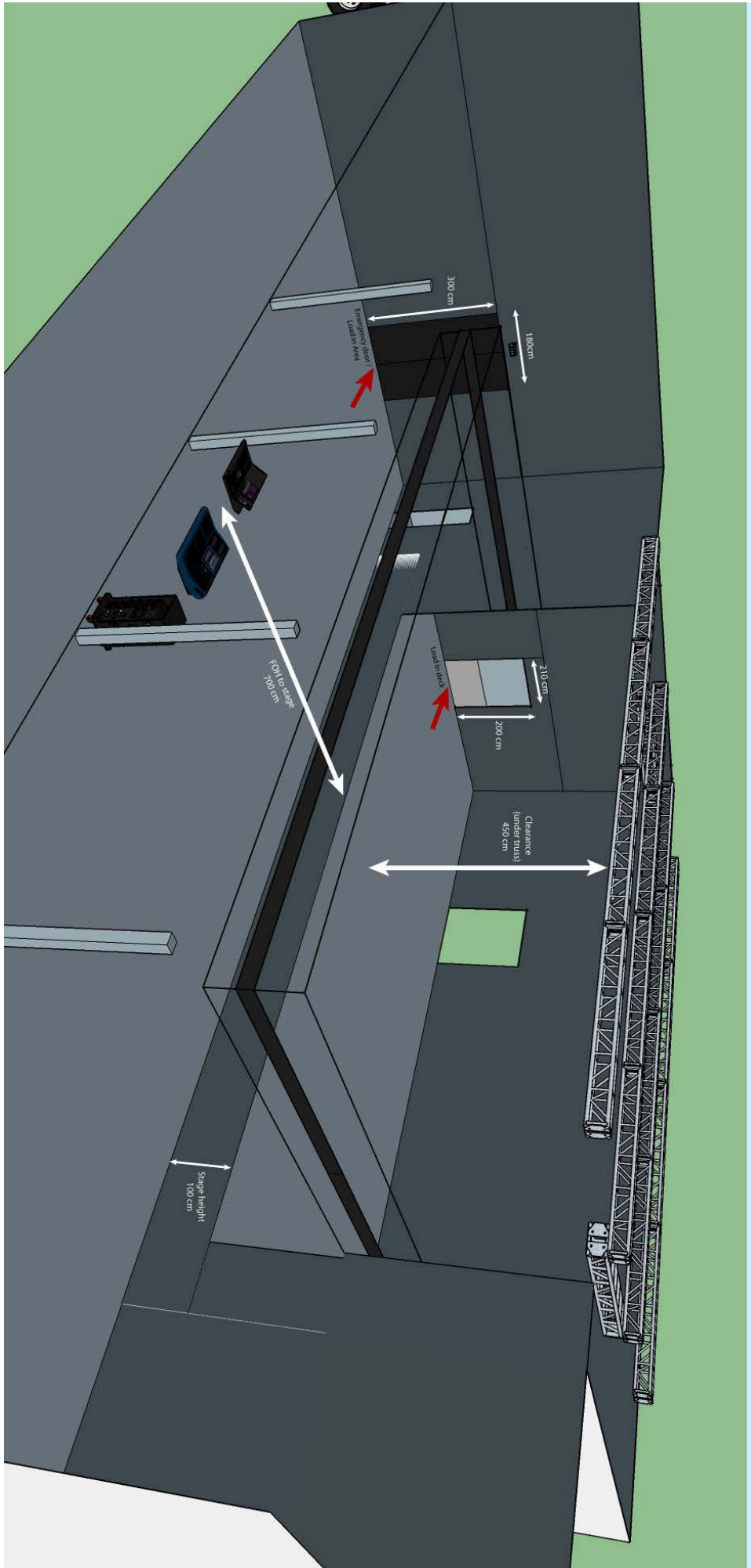
- Situation : No laundry available on site.  
*Dry cleaning or other options on request, at artist cost.*
- Misc : Iron, steamer & ironing board available.

## 27. MISCELLANEOUS

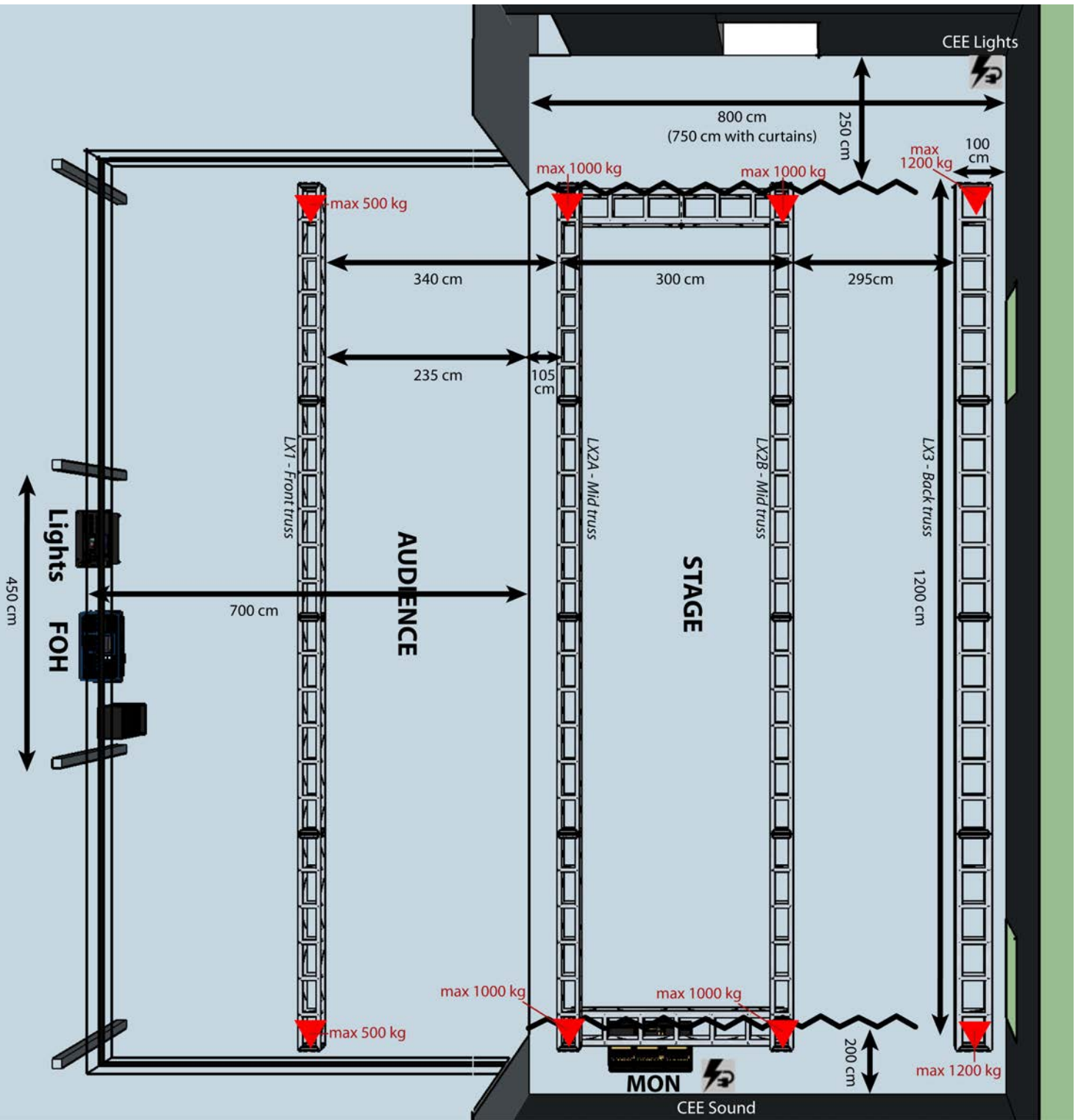
- Runner : upon agreement.
- Hotel : upon agreement.  
*If not included in the offer, don't hesitate to get in touch with us if you need any advices.*
- Towels : Shower towels & dark stage towels available.
- Tourism : Local map & infos available in the dressing rooms.
- Postcards : Available in the backstage area. Put them in the red mailbox and we'll send them for you.

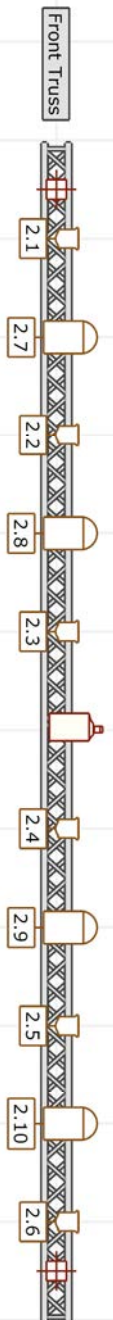
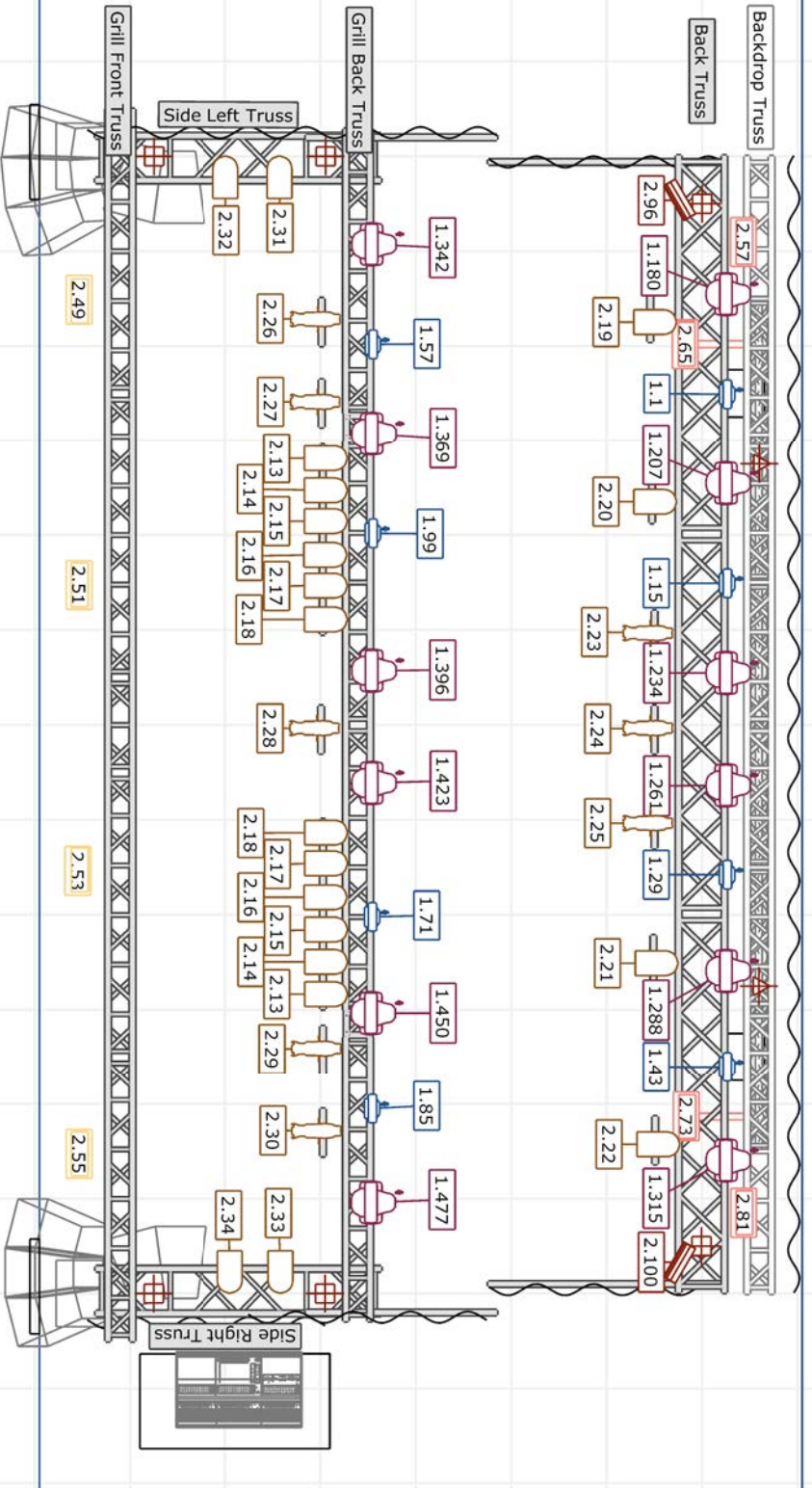
## E. STAGEPLOTS & 3D VIEWS











- Symbol key**
- 20x Par64 CP62 - NSP
  - 12x MAC Quantum Profile Mode Ext 27ch,
  - 8x MAC Aura Mode Standard 14ch,
  - 8x Source Four 36°
  - 6x Fresnel 1Kw
  - 4x Rush Blinder 4x WW
  - 4x Audience Blinder 2x100W LED COB 3200K
  - 4x PC 2Kw
  - 2x Atomic 3000
  - PT-RZ570BU Projector

<b>Docks</b>		<b>Console</b>	
Av. Sévelin 34, 1004 Lausanne		GrandMA 2 Ultralight	
v. 3.9.51.2		v. 3.9.51.2	
IP 192.168.0.1		IP 192.168.0.1	
Caro lighting +41793819054 v.1		Docks Light Plan TDPTop View	
		Grid = 1 meter	

# F. MISCELLANEOUS

## 28. AREAS OF VENUE & PICTURES

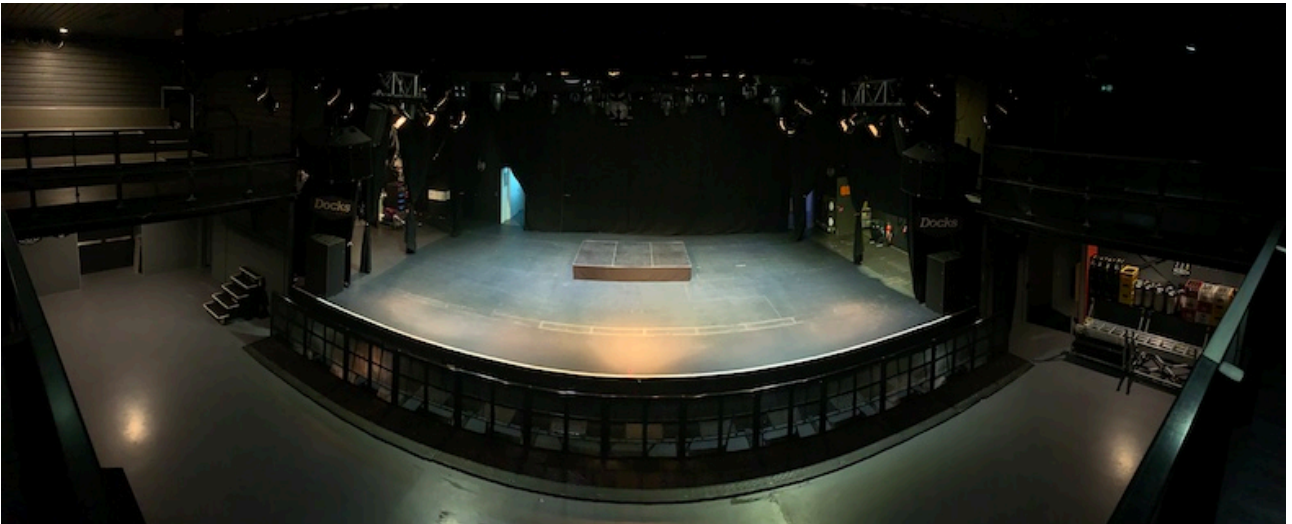
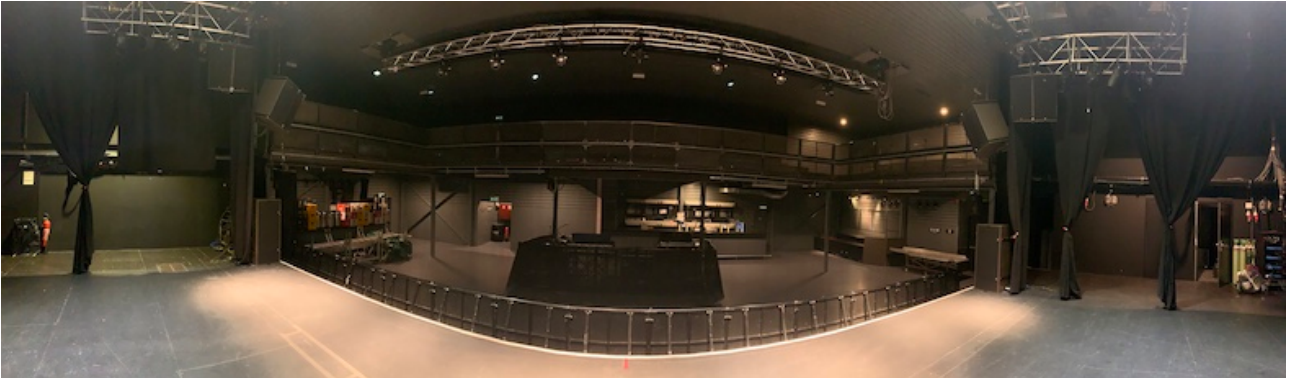


Areas of the venue & Pictures

- Emergency exits
- Backstage area
- Public area
- Office & technical area



## 29. PICTURES OF THE STAGE



### 30. EMERGENCIES SERVICES MAP

